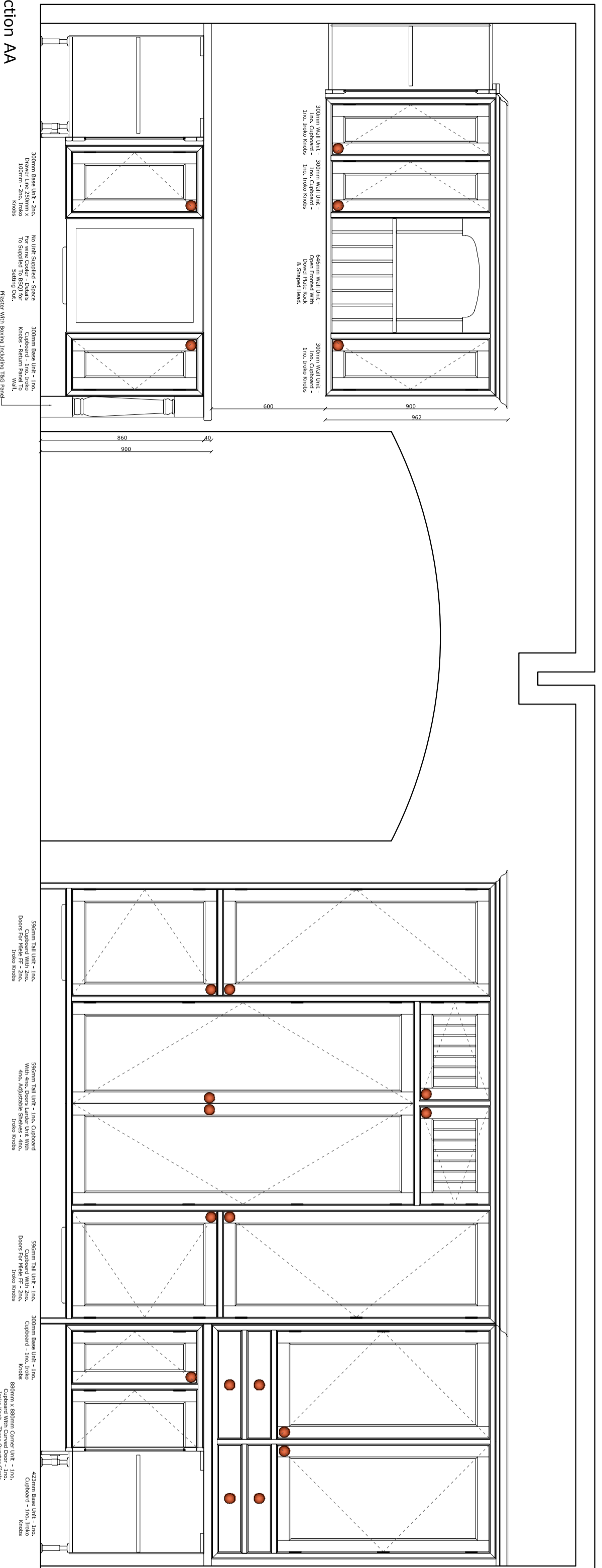


Please Note:-
 This drawing is the sole property of B&S Quality Joinery Ltd and must not be copied or passed on to any third party without the written consent of B&S Quality Joinery Ltd

Notes :-



Section AA

Section BB

Rev E	
Rev D	
Rev C	Larder Unit Updated
Rev B	Approval Issue
Rev A	



B&S Quality Joinery Ltd, Unit 3, Covert Road, Aylesham Industrial Estate,
 Aylesham, Kent, CT3 3EQ,
 Tel:01304 842346 Fax:01304 841104
 E-mail: sales@bssqualityjoinery.co.uk

Client:

Ww Carpentry & Building Con. Ltd

Contact Name:

Adrian Wood

Project:

Bossington House
 Bossington road
 Bossington, Canterbury, CT3 3LN
Job Title:
 Bossington House - Kitchen

Drawing Description:

Elevations AA & BB

Issue

Adrian Wood
Approval

Job No. 681
 Drawing No. BSQJ1431-3

Cut List No. 739

Scale 1:20 @ A2

Date 03-01-07

Drawn By D Partridge

Checked By

Sign _____ Date _____